

# 2025 UBS Taiwan Summit

2025/9/15



1

## Presentation Disclaimer

---

The information herein contains forward-looking statements. We have based these forward-looking statements on our current expectations and projections about future events. Although we believe that these expectations and projections are reasonable, such forward-looking statements are inherently subject to risks, uncertainties and assumptions about us, including, among other things: the intensely competitive Semi-conductor, and LED industries and markets; Cyclical nature of the semiconductor industry; Risks associated with global business activities; General economic and political conditions. All financial figures discussed herein are prepared pursuant to IFRS. All audited figures will be publicly announced upon the completion of our audited process.

2

<h1>1</h1> <p><b>Probe Card</b></p> <p>Since 1995</p> 	<h1>2</h1> <p><b>Photonics Automation</b></p> <p>Since 2001</p> 	<h1>3</h1> <p><b>Advanced Semiconductor Test</b></p> <p>Since 2014</p> 	<h1>4</h1> <p><b>Thermal Test</b></p> <p>Since 2015</p> 	<h1>5</h1> <p><b>Celadon Systems</b></p> <p>Since 2021</p> 
---	---	--	--	--

3

## MPI CORPORATION 全球據點

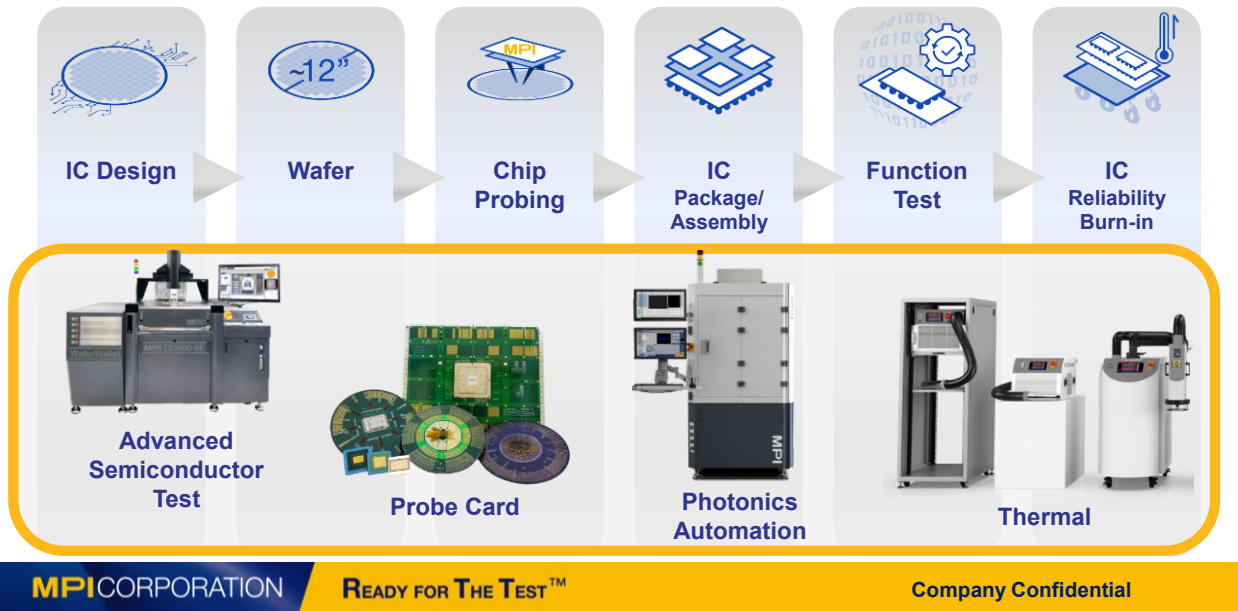


📍 MPI Offices  
📍 MPI Representatives

WORLDWIDE			TAIWAN				
							
<b>MPI America</b> CA, USA (2017)	<b>MPI Suzhou</b> Jiangsu, CN (2017)	<b>Celadon Systems</b> MN, USA (2021)	<b>Headquarters</b> Hsinchu, TW (2000)	<b>Luzhu Office</b> Kaohsiung, TW (2006)	<b>2<sup>nd</sup> Production Site</b> Hsinchu, TW (2012)	<b>Xinpu Office</b> Hsinchu, TW (2014)	<b>3<sup>rd</sup> Production Site</b> Hsinchu, TW (2021)

4

# MPI The Powerhouse of Testing Solutions



MPI CORPORATION

READY FOR THE TEST™

Company Confidential

5



## Business Contents

- Probe Card
- Photonics Automation
- Thermal & AST



## Financial Statements

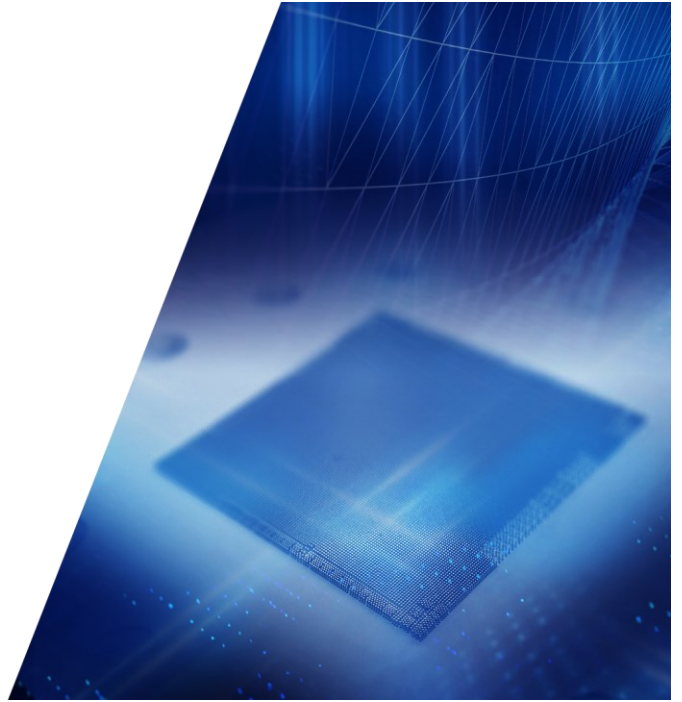
MPI CORPORATION

READY FOR THE TEST™

Company Confidential

6

# 半導體事業部 (探針卡)



7

**MPI Probe Card**  
Advanced Wafer Sort Test Solutions

## Vertical / MEMS Cantilever

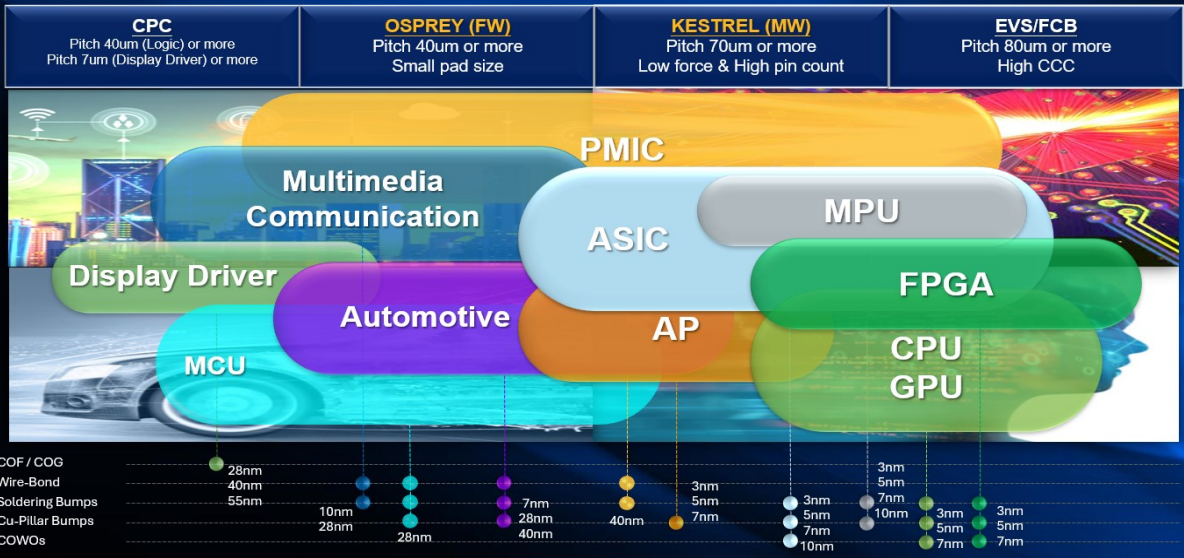
**Features**

- Fine Pitch
- MEMS
- High Pin Count
- High Speed
- Substrate
- Hand-wired
- RF

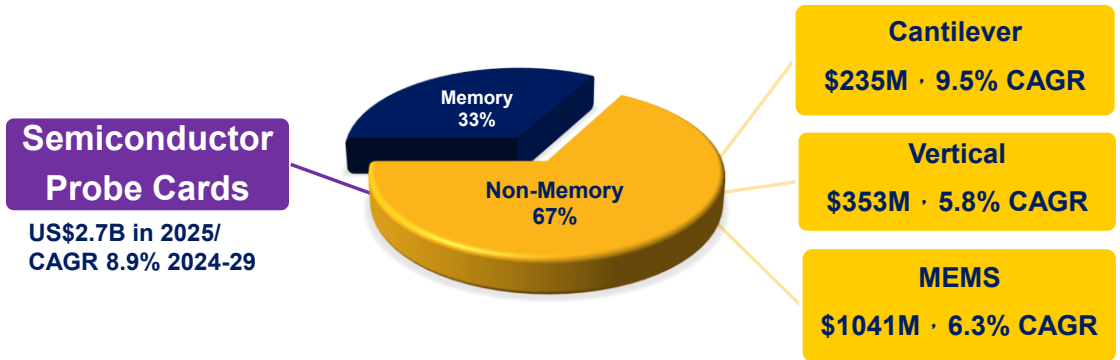
8

# MPI Probe Card

Full range of products for the applications  
sufficient coverage solutions to IC markets



## MPI 全球探針卡市場概況

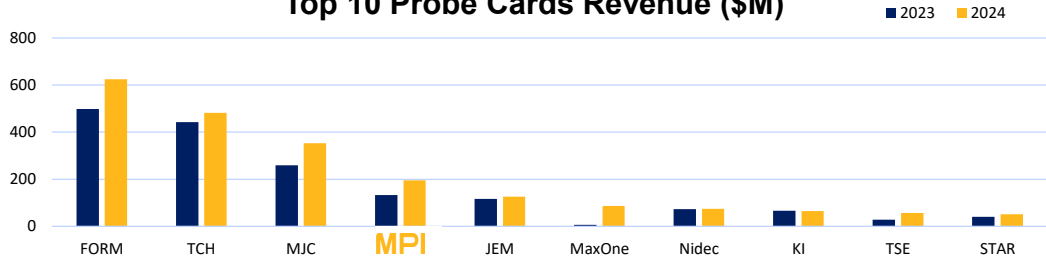


Source: TechInsights(2025/5)

## MPI 自製 IC 探針卡廠商

(Rank)		2020	2021	2022	2023	2024
FormFactor	USA	1	1	1	1	1
Technoprobe	Italy	2	2	2	2	2
Micronics Japan	Japan	3	3	3	3	3
<b>MPI Corporation</b>	<b>Taiwan</b>	<b>5</b>	<b>5</b>	<b>5</b>	<b>4</b>	<b>4</b>
Japan Electronic Materials	Japan	4	4	4	5	5

Top 10 Probe Cards Revenue (\$M)



Source: TechInsights(2025/5)

MPI CORPORATION

READY FOR THE TEST™

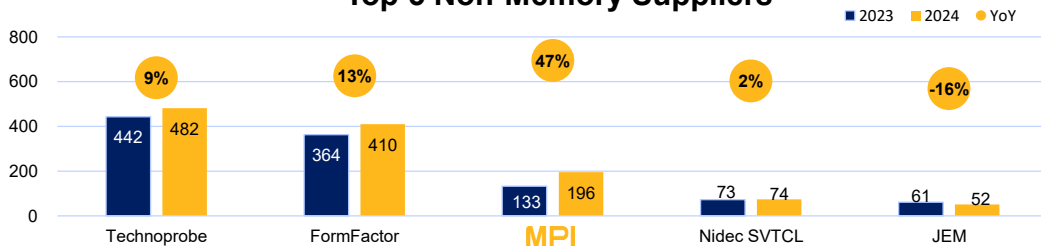
Company Confidential

11

## MPI 前五大非記憶體探針卡廠商

(Rank)		2020	2021	2022	2023	2024
Technoprobe	Italy	2	1	1	1	1
FormFactor	USA	1	2	2	2	2
<b>MPI Corporation</b>	<b>Taiwan</b>	<b>3</b>	<b>3</b>	<b>3</b>	<b>3</b>	<b>3</b>
Nidec SV Probe	Singapore	4	5	4	4	4
Japan Electronic Materials	Japan	5	4	5	5	5

Top 5 Non-Memory Suppliers



Source: TechInsights(2025/5)

MPI CORPORATION

READY FOR THE TEST™

Company Confidential

12

## MPI Probe Card: 提供全方位解決方案

- **Comprehensive Product Range for Circuit Testing** 全方位的產品布局  
MPI provides omnidirectional products to global customers, including fine pitch CPC, high speed VPC and low force MEMS solutions.
- **Solid Global Clientele** 堅實的國際合作夥伴  
MPI works closely with worldwide market leaders, especially for the AI, HPC application related.
- **Complete Probe Card Solution** 完整的探針卡整合方案  
Provide probe head, substrate(MLO/MLC/MLOC) and PCB one-stop service.

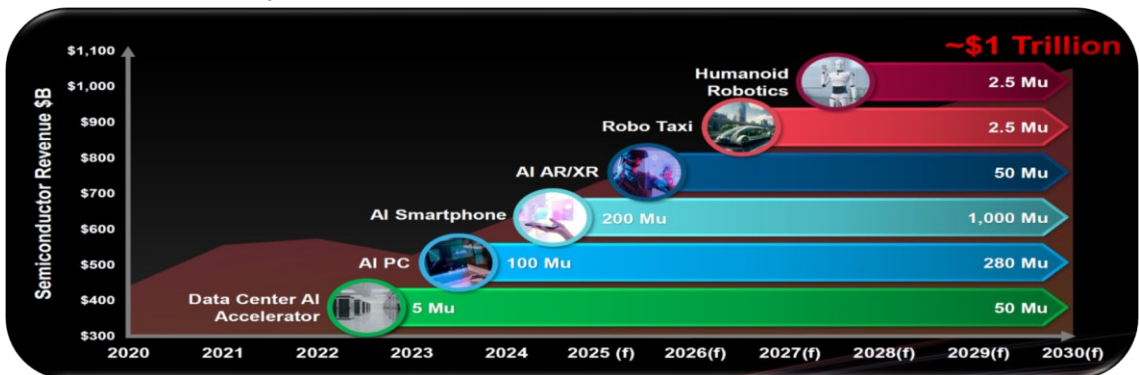
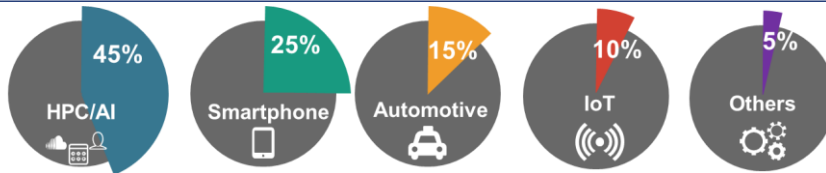
MPI CORPORATION

READY FOR THE TEST™

Company Confidential

13

## MPI 2030年半導體市場規模約 1 兆美元



Source: TSMC

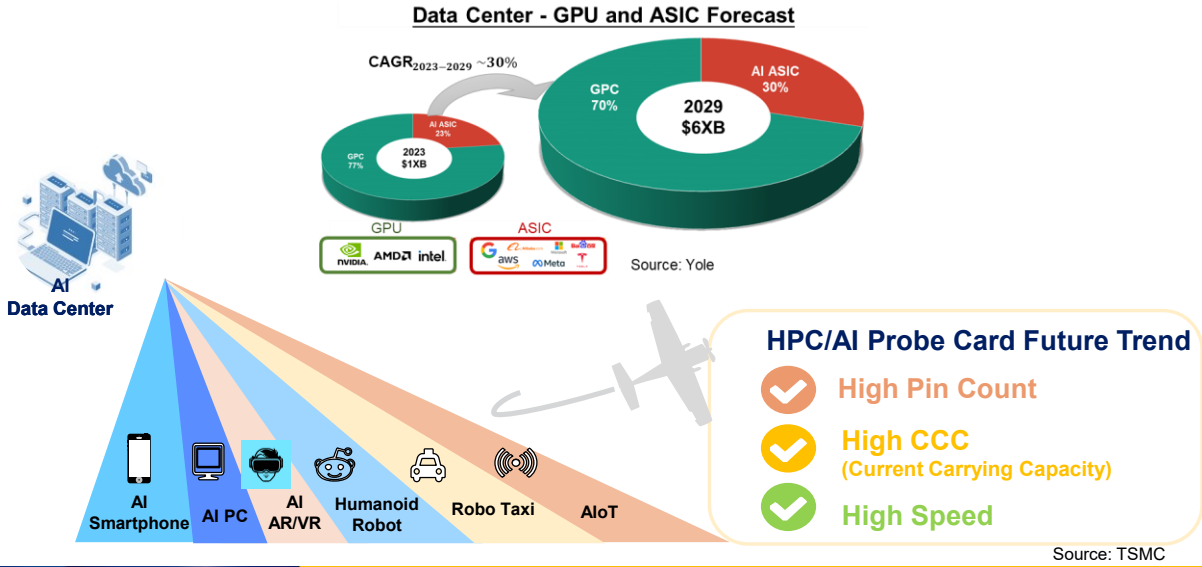
MPI CORPORATION

READY FOR THE TEST™

Company Confidential

14

# MPI HPC/AI 探針卡挑戰



# MPI Interface Technical Complexity Check in

STAYING AHEAD OF THE PROBE CARD COMPLEXITY CURVE

TERADYNE

Eric Shoemaker  
Steve Ledford

June 5 - 7, 2023

### Following the "2 x 4 Scaling" trend demonstrated over last two decades

	Today	2030
<b>Pin Density</b>	70 um pad pitch 16,000 pins per cm <sup>2</sup> 150+ Kg (total contact)	30 um pad pitch 64,000+ pins per cm <sup>2</sup> 300+ Kg (total contact)
<b>I/O</b>	112 Gbps (dig) 54 GHz (5G) 2 kV (automotive)	400+ Gbps (dig) 110+ GHz (6G) 8 kV (automotive)
<b>Power</b>	700 mV (main power) 750 A (single rail) 500 μOhm (impedance)	<500 mV (main power) 2000 A (single rail) 100 μOhm (impedance)
<b>Thermal</b>	0.5 KW (self heating) 0C to +125C	1.0 KW (self heating) -40C to +160C

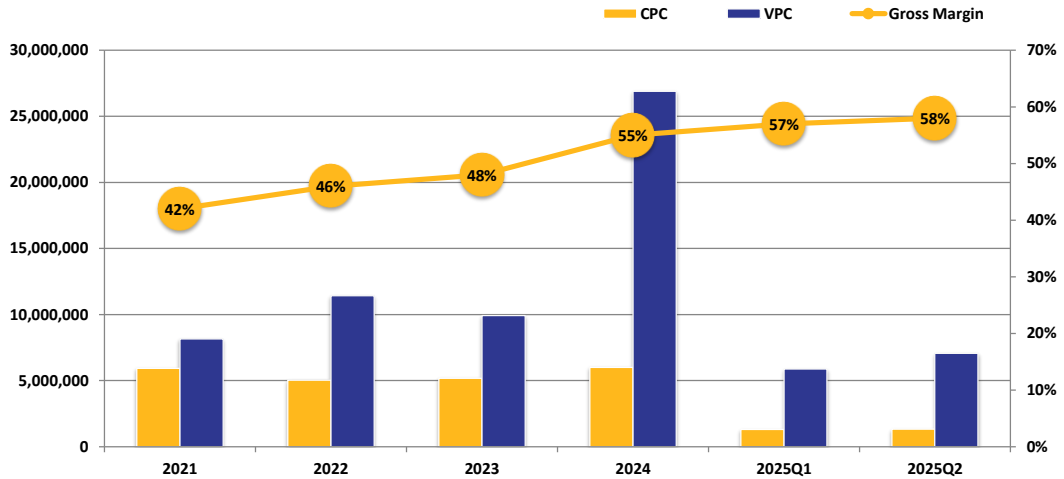
Source: Teradyne

MPI CORPORATION

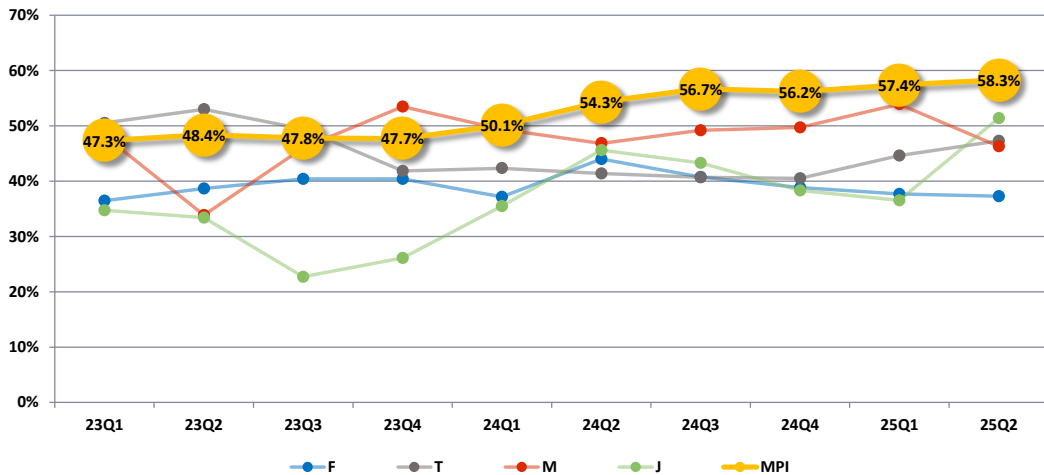
READY FOR THE TEST™

Company Confidential

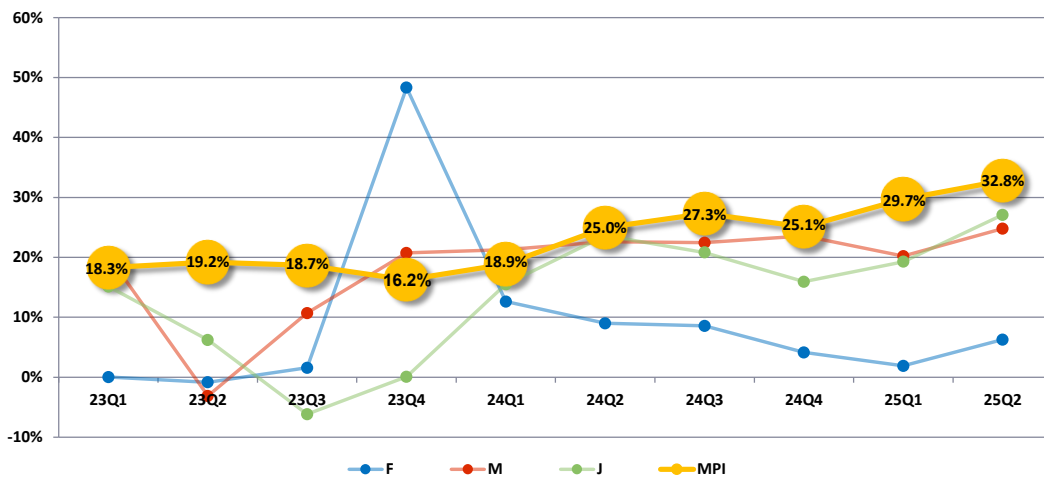
## MPI CPC及VPC成長趨勢



## MPI 全球同業毛利率



## MPI 全球同業營利率



MPI CORPORATION

READY FOR THE TEST™

Company Confidential

19

MPI CORPORATION

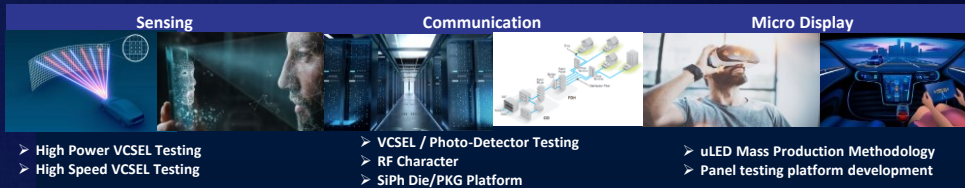
## 發光二極體事業部



20

# MPI Development Plan by Application

Wafer / Device Automated Probe, Test & Measurement, Sort and Inspection



MPI CORPORATION

21

21

## MPI PA: 與市場領導者合作

### ● Value Enhanced Product Lines 客戶價值導向的產品線規劃

MPI's experienced RD team comes across lighting and electrical fields with automation core technology that enables us to develop leading market solutions ie VCSEL & Micro LED.

### ● Solid Global Clientele 穩固的全球客戶群

MPI works closely with market leaders and international brand names for most advanced testing solutions.

### ● Continuous Product Innovation 持續的產品創新

Non stop RD investments helps MPI to provide high value added products that tackles clients' testing bottleneck.

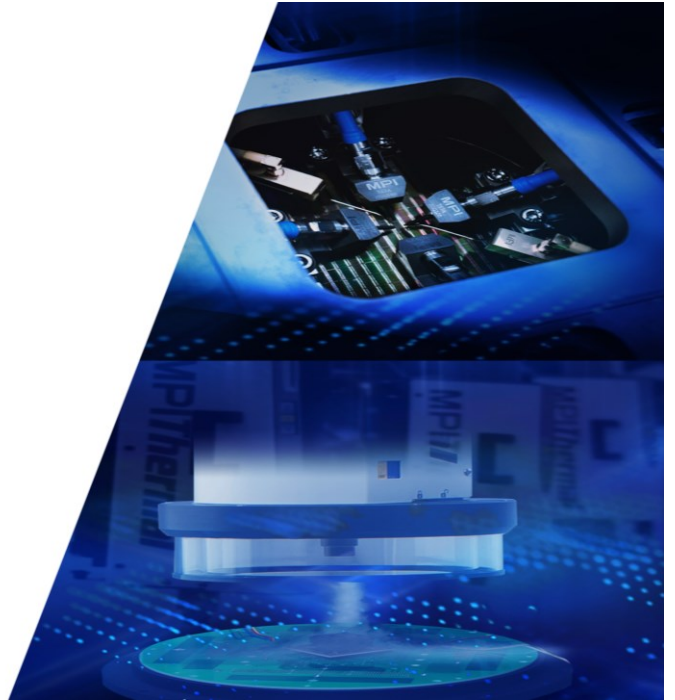
MPI CORPORATION

READY FOR THE TEST™

Company Confidential

22

# Thermal/AST



**MPI Thermal**  
Hot and Cold Air Flow  
Environmental Temperature Test

-100°C  +300°C  
**ThermalAir Series**  
Temperature Testing Systems



Applications & Industry Segments

 Semiconductor	 Automotive	 Aerospace	 Telecommunications	 Fiber Optic	 Electronics	 Sensors	 Advanced Technology
--	---	--	---	--	---	--	--

MPI CORPORATION

## MPI Thermal: 客戶導向

- **Innovational Temperature System 創新的溫度測試系統**

Ongoing R&D investments in platforms and improvements leads MPI to meet customer demands. Thermal systems have a number of patents to provide efficient energy saving products that helps clients to fulfill ESG responsibility.

- **Top Skillful RD Team 頂尖優秀專業的研發團隊**

MPI's thermal solutions are developed by industry veterans with over 100 years of combined experience.

- **Deep Cooperation with Leading Customers for Engineering and Production demand**

與世界領導級大廠深度合作, 提供工程及量產需求

Product application expands to automotive , 5G/RF communication , fiber optic , and sensing fields.

MPI CORPORATION

READY FOR THE TEST™

Company Confidential

25

# MPI Advanced Semiconductor Test

Engineering Probe Systems  
and  
RF Probe Products

50 – 300 mm

26 – 110 GHz

Applications & Industry Segments

- Device Characterization
- High Power
- RF & mmW
- Design Validation
- Failure Analysis
- Wafer Level Reliability
- Silicon Photonics
- Laser Cutter

MPI CORPORATION

26

## MPI AST:獨特的市場領導者

---

- **Unique Global Position** 全球獨特的市場地位

Combining Analytical probing solution and RF measurement core technology , MPI is top solution provider for full range hi-frequency response measurement.

- **VOC Design** 客戶導向設計

Design based on Voice of the customer to full-fill customers' needs.

- **Complete Solution** 提供完整的解決方案

Various series of products to cover wide range applications include Device Modeling, RF & mmW, WLR, High-Power, Failure Analysis, Extreme temperature test ...etc.

MPI CORPORATION

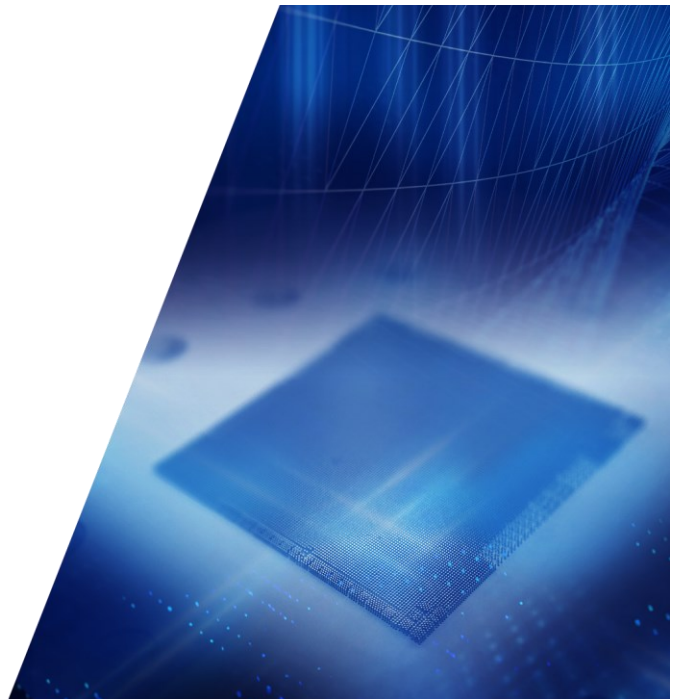
READY FOR THE TEST™

Company Confidential

27

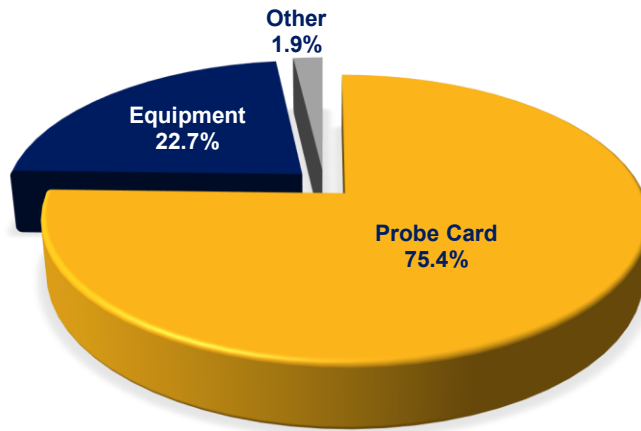
MPI CORPORATION

## 財務報表



28

## MPI 2025 Q2 出貨分布



## MPI 營業表現

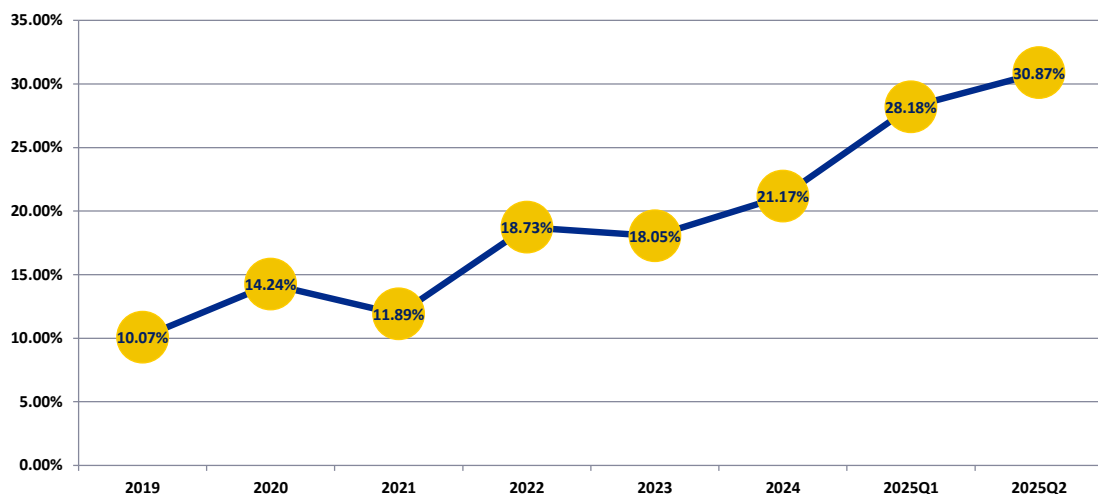


Continuous revenue growth driven by high customer satisfaction

Margin expansion is the result of strong RD investment

Accelerating profit earning shows MPI's shareholder commitment

## MPI 股東權益報酬率



## MPI 資產負債表

NT\$M	2025 1H		2024 1H	
Cash and Cash Equivalents	5,637	28%	2,674	20%
Fixed Assets	8,620	43%	5,913	43%
Total Assets	20,123	100%	13,697	100%
LT Debt	1,152	6%	1,404	10%
Shareholders' Equity	9,393	47%	8,196	60%
EBITDA	1,644	27%	1,166	26%

\*EBITDA=operating income + depreciation & amortization expenses

## MPI 損益表

NT\$K	2025 Q2		2025 Q1		QOQ	2024 Q2		YOY
Net Sales	3,292,785	100%	2,828,698	100 %	16.4%	2,392,994	100%	37.6%
Cost of Goods Sold	1,373,511	42%	1,205,368	43%	14.0%	1,092,949	46%	25.7%
Gross Profit	1,919,274	58%	1,623,330	57%	18.2%	1,300,045	58%	47.6%
Operating Expense	840,212	25%	782,986	27%	7.3%	702,449	29%	(19.6%)
Operating Income	1,079,062	33%	840,344	30%	28.4%	597,596	25%	80.6%
Investment Income & Others	(322,830)		47,380		(781.2%)	86,652		(472.7%)
Net Income (after tax)	627,916	19%	723,042	26%	(13.2%)	542,674	23%	15.7%
EPS (after tax)	6.67		7.68		(13.2%)	5.76		15.8%

Thank  
You.