



Goldman Sachs “ Taiwan Corporate Day”

Updated: Jan, 2010

CONTENTS

A. Company Profile	03
B. Products	06
Appendix	29





A. Company Profile

a1. Company at a Glance

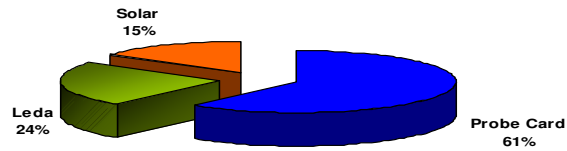
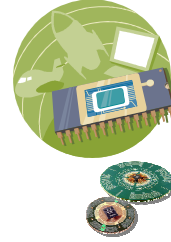
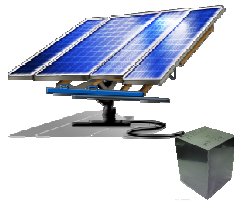
a2. Business Portfolio

A a1. Company at a Glance

Address	No. 155, Chung-Ho St., Chu-Pei, Hsinchu, 302 Taiwan, R.O.C.
Founded	July, 25, 1995
Paid-in Capital	NTD\$ 733M
No. of Employees	743
Southern Taiwan Branch	No. 7, Luke 1st Rd., Luzhu Shiang, Kaohsiung, 821 Taiwan, R.O.C.



A a2. Business Portfolio : 2009



B. Products

b1. LED: Prober & Sorter

- 01. LED Food Chain
- 02. LED Trend
- 03. Business Contents

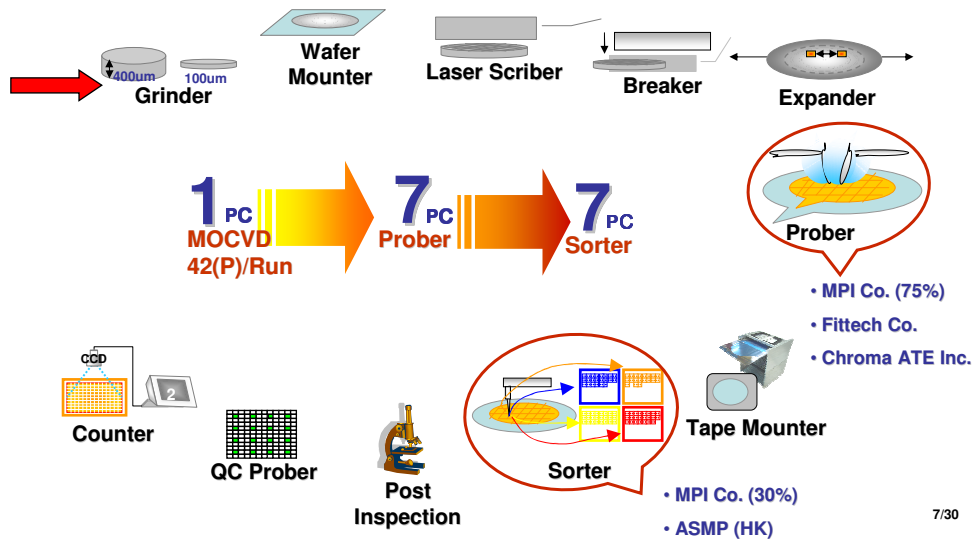
b2. Semi-conductor: Probe Card

- 01. Semi-conductor
- 02. Peer Group Analysis
- 03. Business Contents

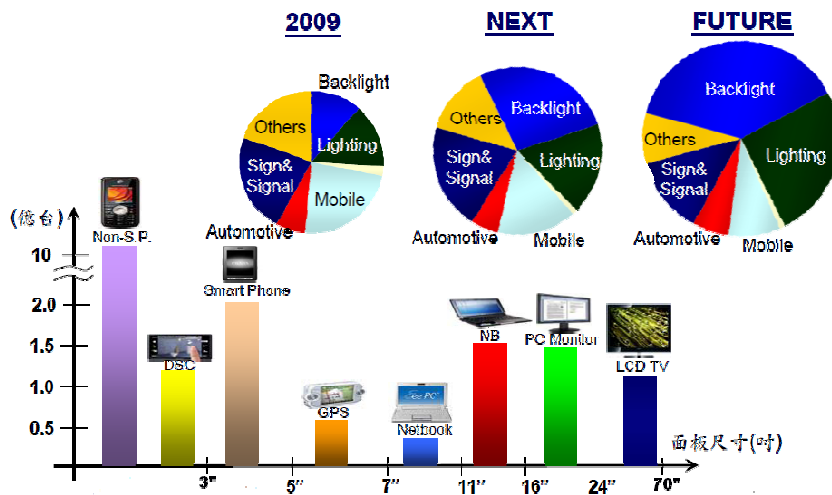
b3. Solar: Ingot Slicing

- 01. Wafer Process in Solar
- 02. Business Contents

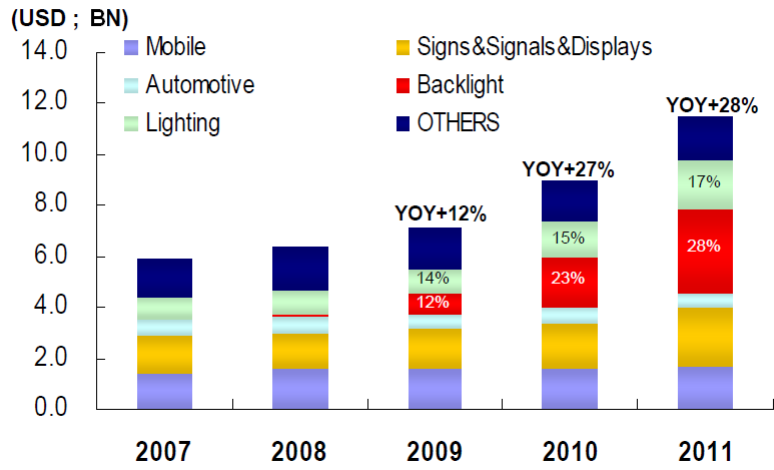
B1 01. LED EPI-Wafer Process



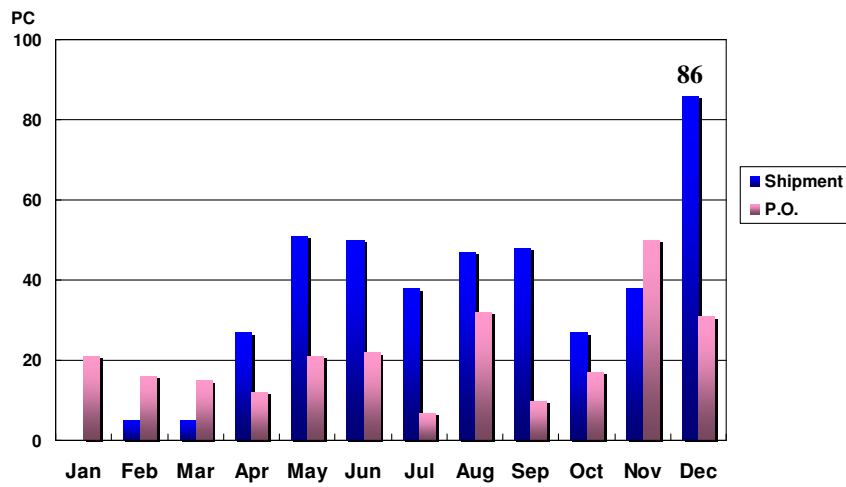
B1 02. LED Trend



B1 02. LED CAGR

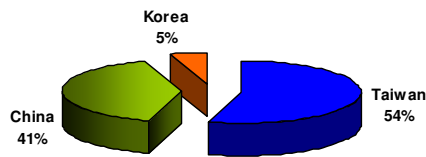


B1 03. Equipment Shipment 2008~2009

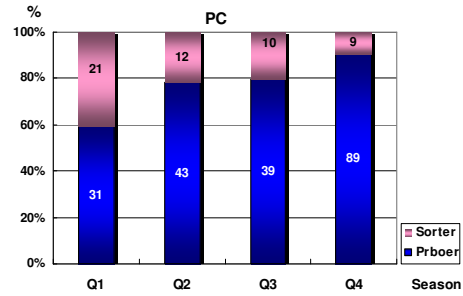


B1 03. Shipment: Geography & Product Mix

by Geography



by Product



B1 03. 2009 Major Customers

Taiwan

- FOREPI
- OPTOTECH CORPORATION
- TAIWAN SEMICONDUCTOR
- CHIMEI
- Lumitek
- 鼎元光電科技股份有限公司
TYNTEK CORPORATION

Korea

- TSE Technology & Science Enabler
- LG Life's Good
- SAMSUNG

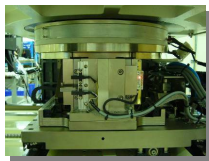
China

- Neo-Neon™
- 武汉华灿光电有限公司
Wuhan HC SemiTek Co., Ltd.
- CHIMEI
- 三安光电股份有限公司

B1 03. Prober

LEDA-PT120 PROBER

Semi-Automatic Probe Station

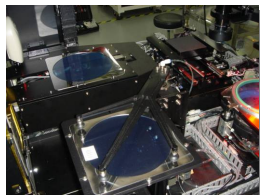


13/30

B1 03. Sorter

LEDA-PNP

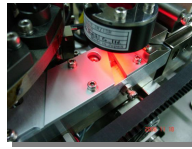
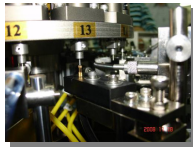
M7600 Fully-Auto Mapping Sorter



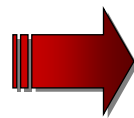
14/30

B1 03. Auto Taping Machine

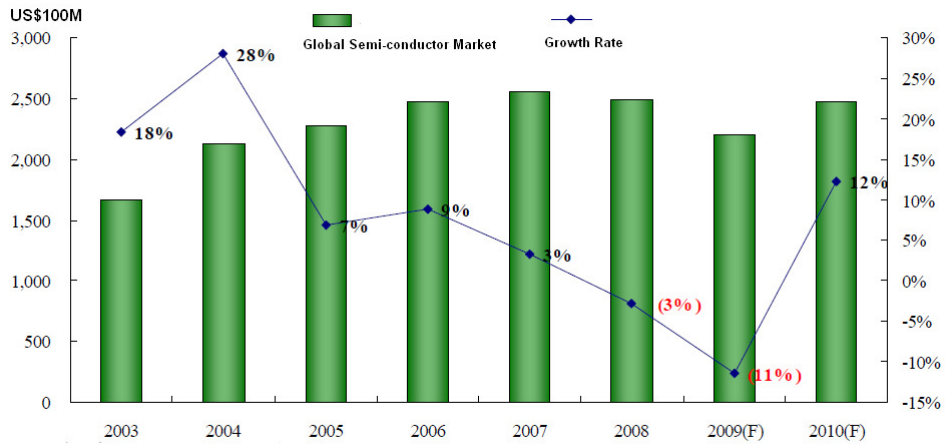
PT-350 TAPING
LED-Auto Taping Machines



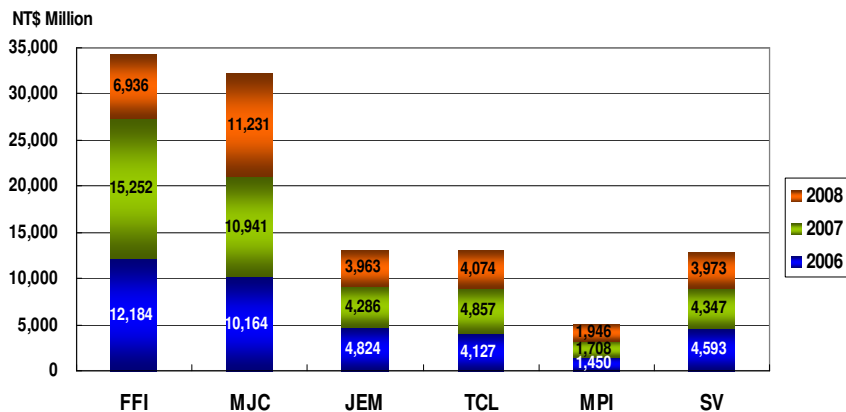
B1 03. State-of-the-Art 2 in 1 Machine



B2 01. Market Consensus: Semi-Conductor



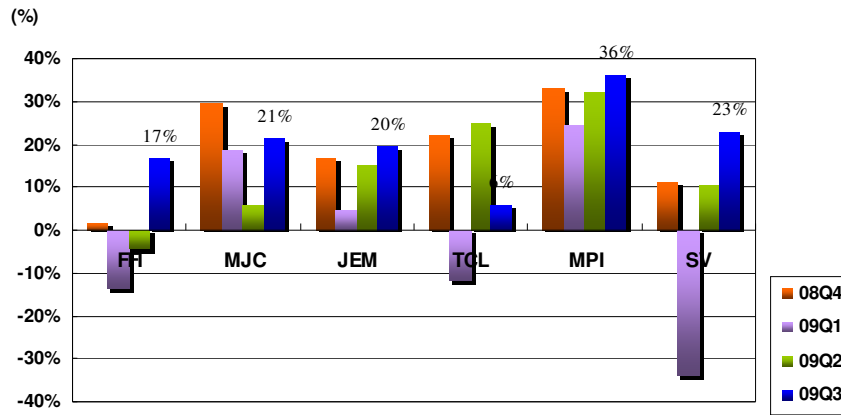
B2 b2. Peer Group Analysis



P1 : Exchange rate: 1 dollar = NT 33 ; 1 JPY = NT 0.3; 1SGD = NT 22

P2 : SV probe in 100% wholly own by Ellipsiz, an semi-conductor equipment maker, from 2006.

B2 02. Peer Group Analysis (con.)



P1 : same quarter period in all company. Ex: Q1= 2008.01~2008.03.

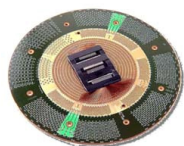
P2 : Exchange rate: 1 dollar = NT 33 ; 1 JPY = NT 0.3; 1SGD = NT 22

P3 : SV probe in 100% wholly own by Ellipsiz, an semi-conductor equipment maker, from 2006.

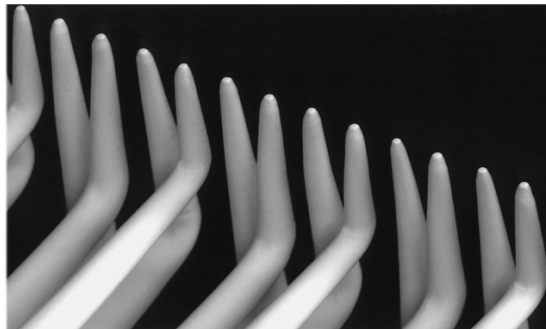
B2 03. Categories of Probe Card



Logic P/C

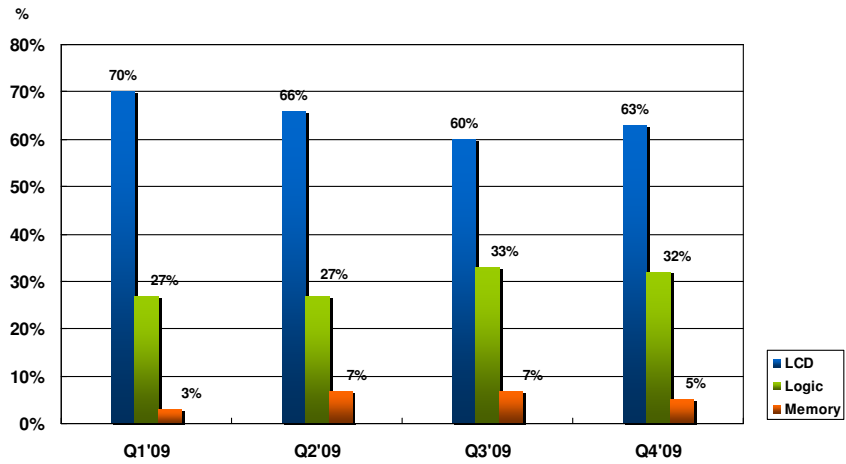


LCD Driver IC

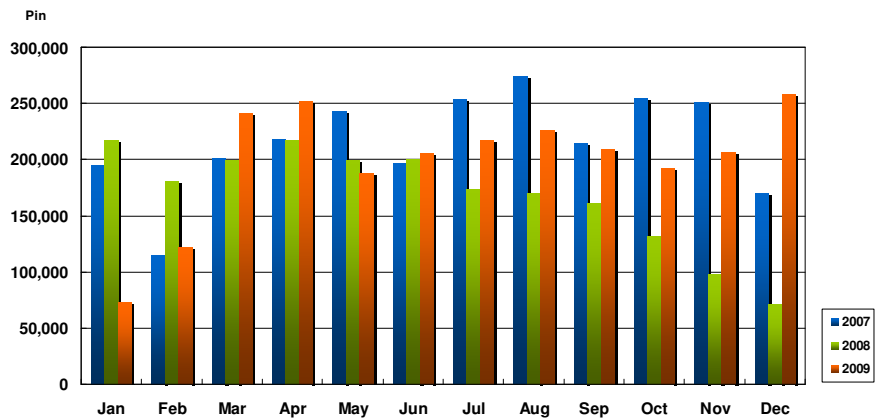


40 μm pitch for LCD Driver IC

B2 03. Product Mix in 2009



B2 03. Monthly Shipment 2007~2009



B2 03. 2009 Major Customers

Design Houses



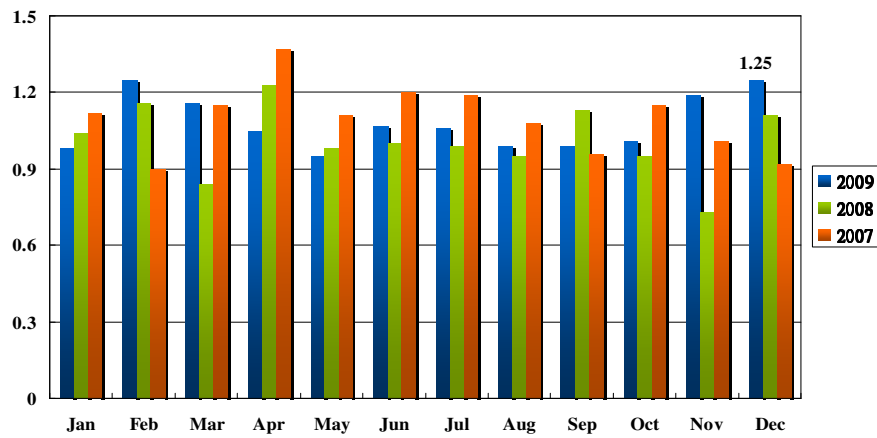
Foundries



Testing Houses



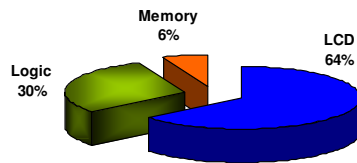
B2 03. B/B Ratio 2007~2009



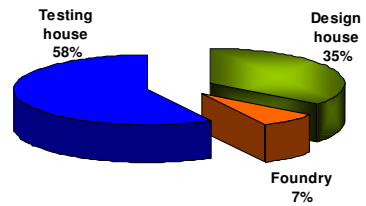
B2 03. Product & Customers Mix (%)

2009

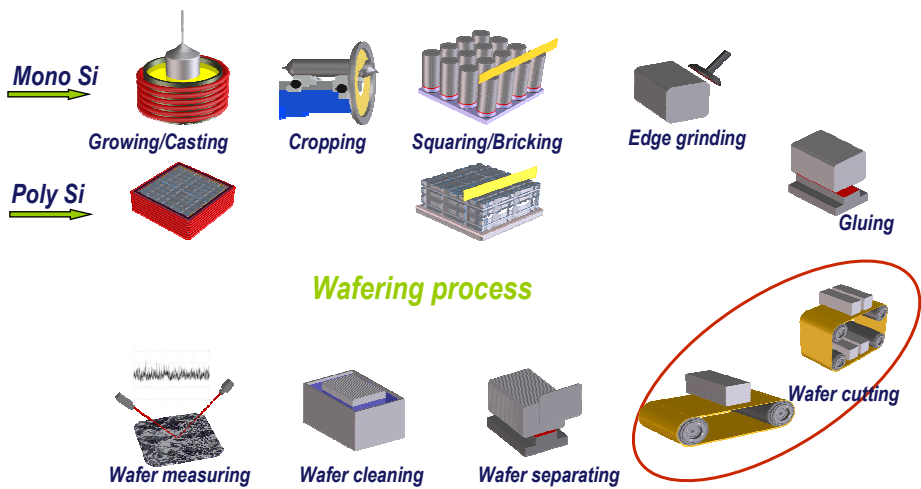
by Product



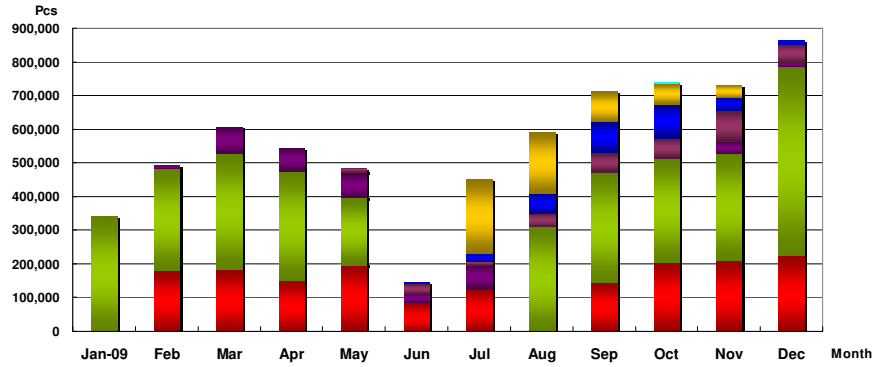
by Customer



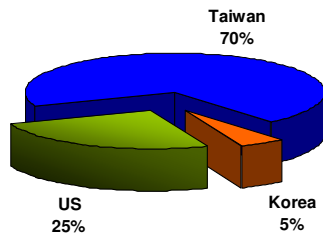
B3 01. Wafer Process in Solar



B3 02. Shipment 2009



B3 02. 2009 Shipment by Geography





Appendix



Global LED Sectors

		2008	2009	2010	2011
LED 封裝產值 (Bn;NTD)	LED Laptop	4.21	16.2	30.3	34.8
	LED Monitor	0.16	0.44	1.50	3.98
	LED TV	1.06	10.3	35.1	68.4
	TOTAL	5.42	26.9	67.0	107
LED 晶粒需求量 (Bn;pcs)	LED Laptop	1.14	4.42	7.38	8.60
	LED Monitor	0.04	0.12	0.41	1.08
	LED TV	0.22	2.71	9.50	18.5
	TOTAL	1.64	7.94	18.3	29.5

(2009/08) ; Laptop including Netbook and Regular NB